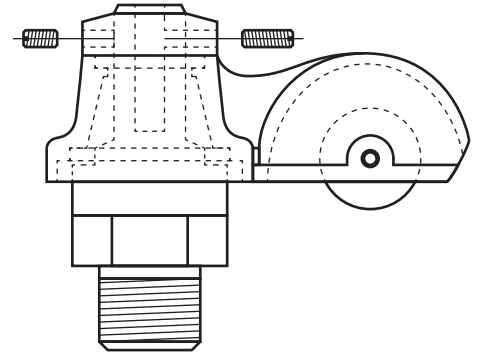
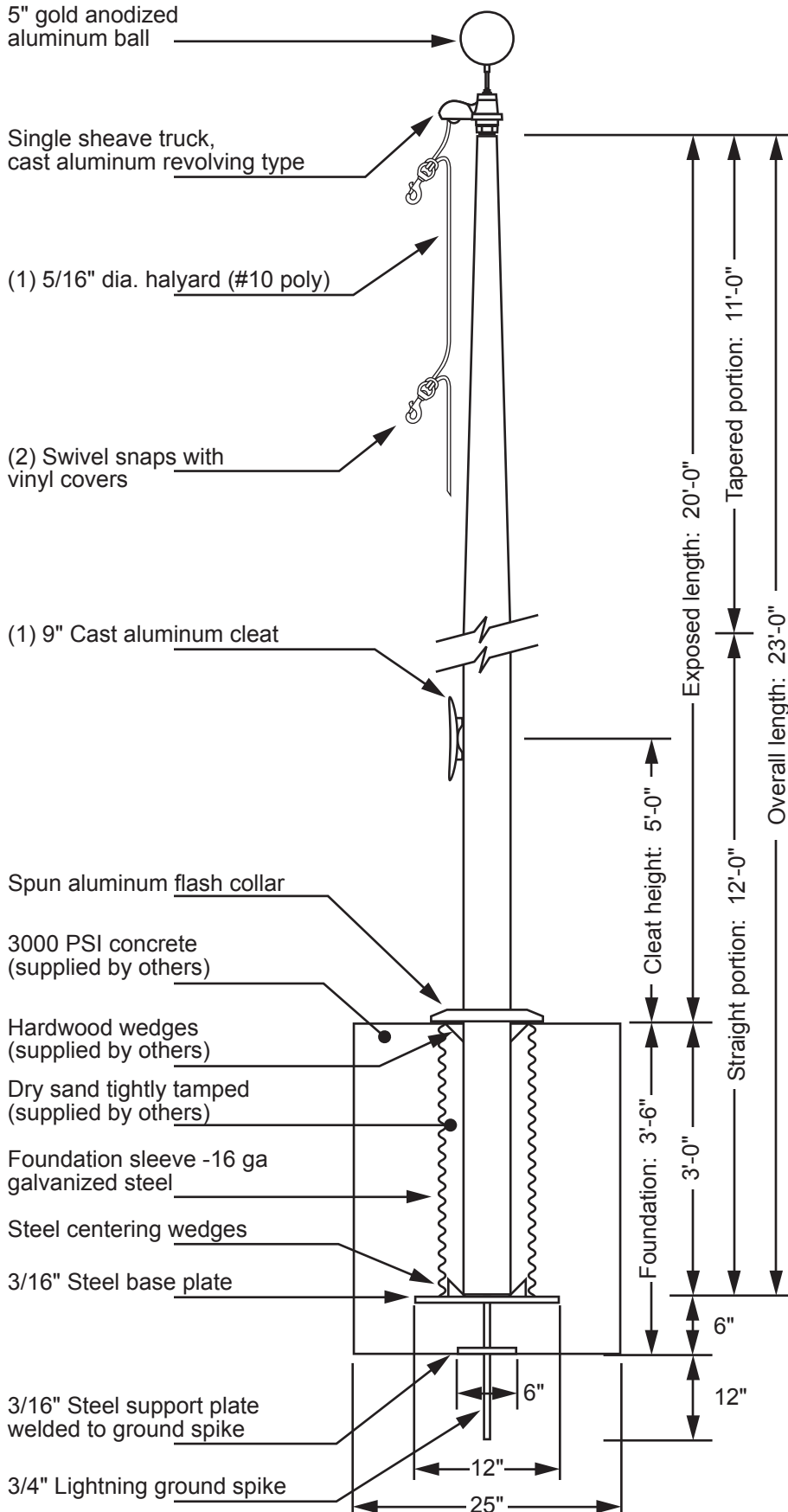


# Model EC20 - External Single Halyard



www.flagpolewarehouse.com



## Single Sheave Truck Detail

Revolving truck  
Cast aluminum body  
Stainless steel ball bearings  
Nylon sheave  
Cast aluminum spindle

Project:	Date:	Exposed Height __ 20'-0"	Ground Set Tapered Aluminum Flagpole	<b>EDER FLAG</b> 1000 W. Rawson Avenue Oak Creek, WI 53154 www.ederflag.com
Location:	Job:	Overall Height __ 23'-0"	ALLOY 6063T6	
Contractor:	Revision:	Butt Diameter __ 5"	80 grit polish	FINISH:
Customer:		Top Diameter __ 3"		
		Wall Thickness __ .188"		
		Ships in 1 section		

