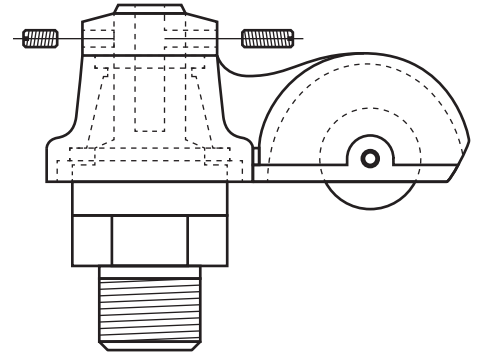
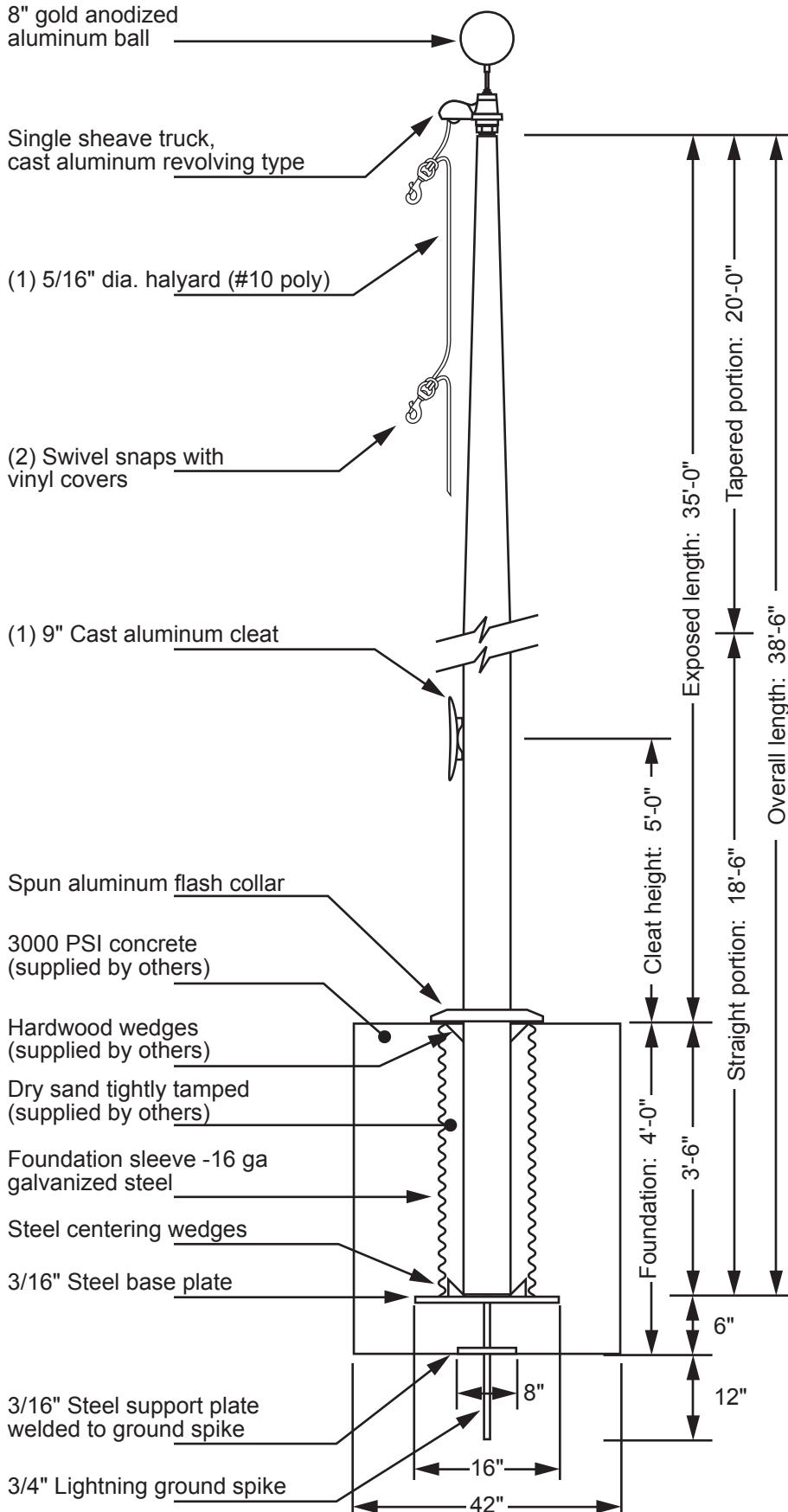


Model EC35 - External Single Halyard



www.flagpolewarehouse.com



Single Sheave Truck Detail

Revolving truck
Cast aluminum body
Stainless steel ball bearings
Nylon sheave
Cast aluminum spindle

Project:	Date:	Exposed Height __ 35'-0"	Ground Set Tapered Aluminum Flagpole	EDER FLAG 1000 W. Rawson Avenue Oak Creek, WI 53154 www.ederflag.com
Location:	Job:	Overall Height __ 38'-6"	ALLOY 6063T6	
Contractor:	Revision:	Butt Diameter __ 7"	80 grit polish	FINISH:
Customer:		Top Diameter __ 3-1/2"		
		Wall Thickness __ .188"		
		Ships in 1 section		

