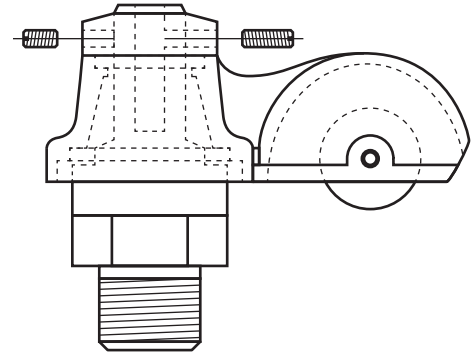
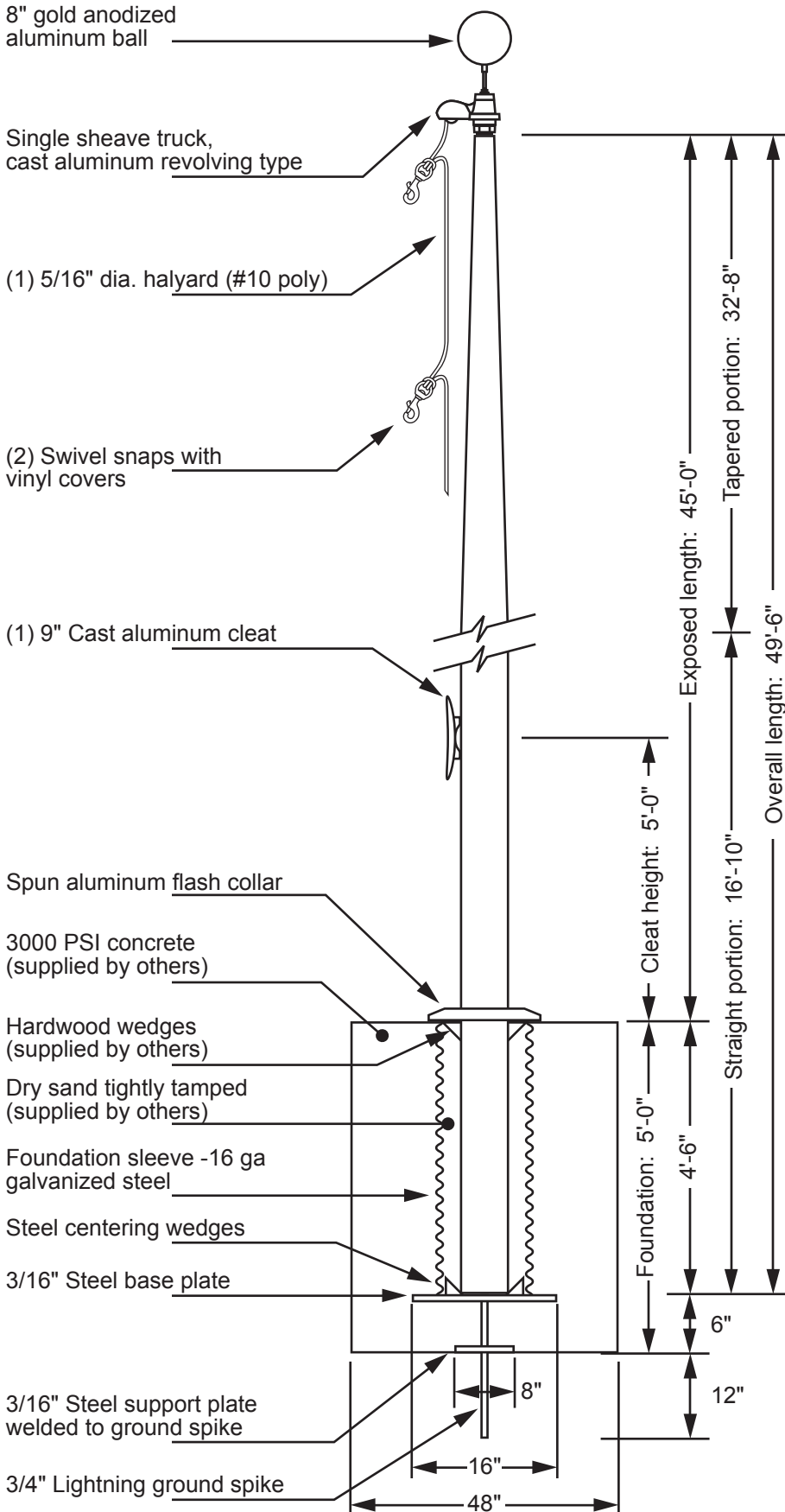


# Model EC45 - External Single Halyard



www.flagpolewarehouse.com



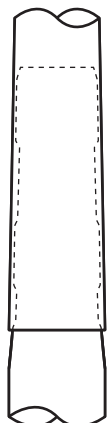
## Single Sheave Truck Detail


Revolving truck  
Cast aluminum body  
Stainless steel ball bearings  
Nylon sheave  
Cast aluminum spindle

All shafts with overall length of more than 38'-6" are shipped in multiple sections.

Each section is matched and marked for field assembly. Exposed portion of jam sleeve must be **well lubricated** prior to assembly.

1-1/2" maximum gap allowed for field fitting.



Project:	Date:	Exposed Height __ 45'-0"	Ground Set Tapered Aluminum Flagpole	<b>EDER FLAG</b> 1000 W. Rawson Avenue Oak Creek, WI 53154 www.ederflag.com 
Location:	Job:	Overall Height __ 49'-6"	ALLOY 6063T6	
Contractor:	Revision:	Butt Diameter __ 8"	80 grit polish	
Customer:		Top Diameter __ 3-1/2"	FINISH:	
		Wall Thickness __ .188"		
		Ships in 2 sections		