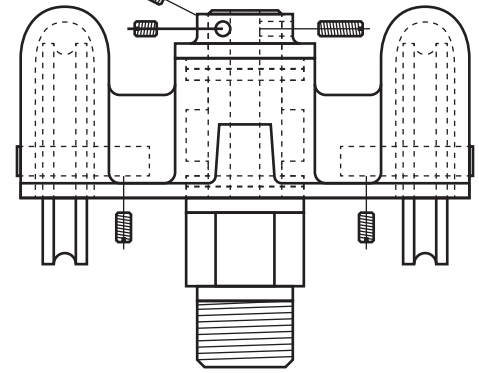
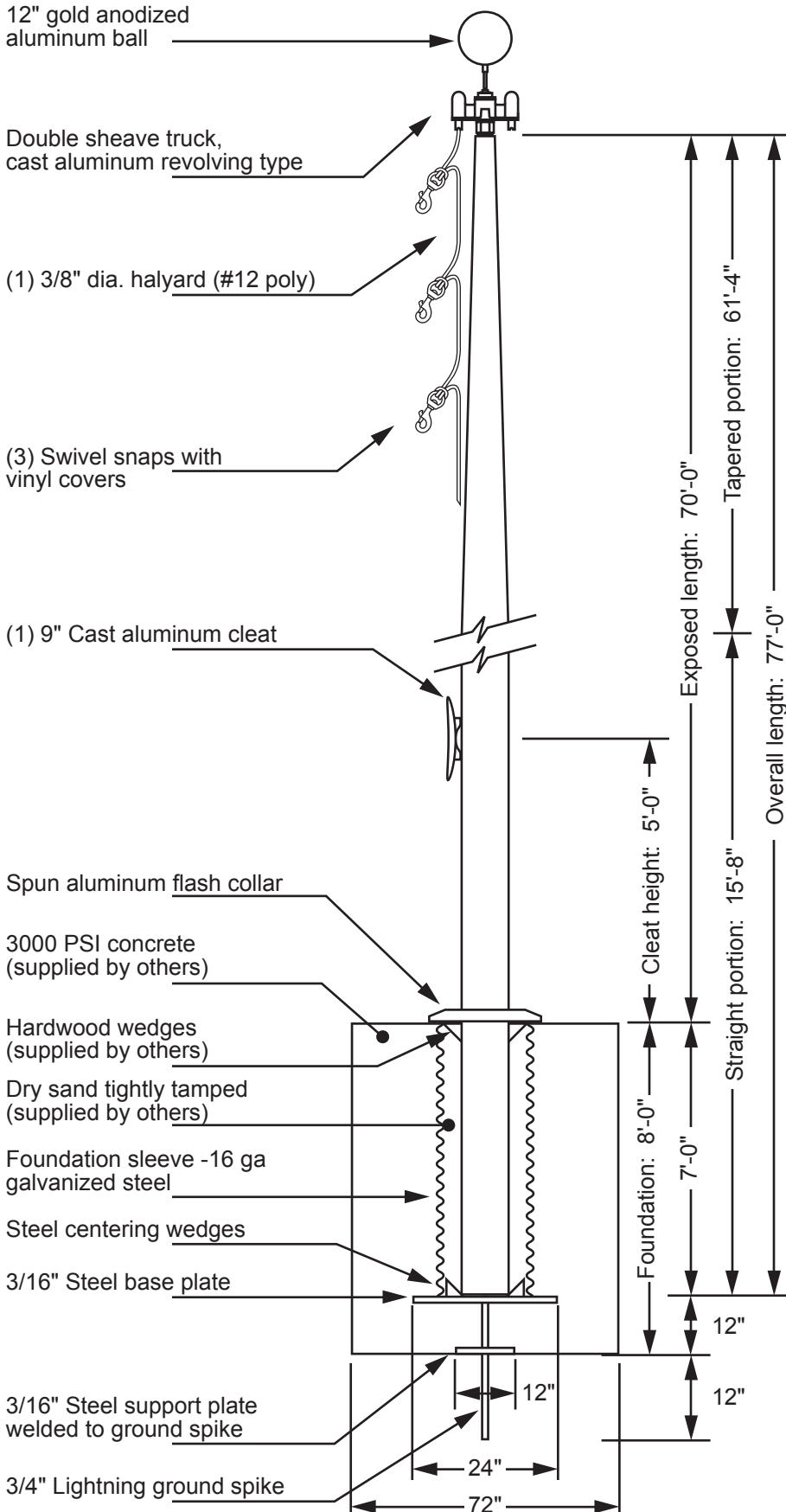


## Model EC70 - External Single Halyard



www.flagpolewarehouse.com



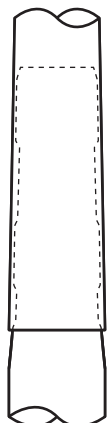
### Double Sheave Truck Detail

Revolving truck  
Cast aluminum body  
Stainless steel ball bearings  
Cast aluminum sheaves  
Cast aluminum spindle

All shafts with overall length of more than 38'-6" are shipped in multiple sections.

Each section is matched and marked for field assembly. Exposed portion of jam sleeve must be **well lubricated** prior to assembly.

1-1/2" maximum gap allowed for field fitting.



Project:	Date:	Exposed Height __ 70'-0"	Ground Set Tapered Aluminum Flagpole	<b>EDER FLAG</b> 1000 W. Rawson Avenue Oak Creek, WI 53154 www.ederflag.com
Location:	Job:	Overall Height __ 77'-0"	ALLOY 6063T6	
Contractor:	Revision:	Butt Diameter __ 12"	80 grit polish	FINISH:
Customer:		Top Diameter __ 4"		
		Wall Thickness __ .250"		
		Ships in 3 sections		

