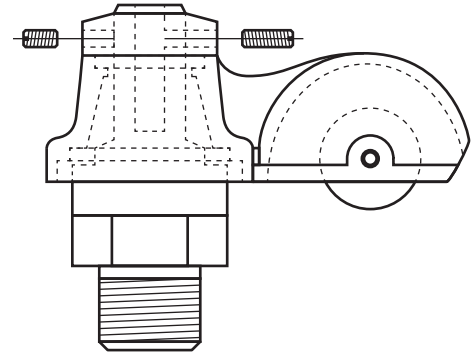
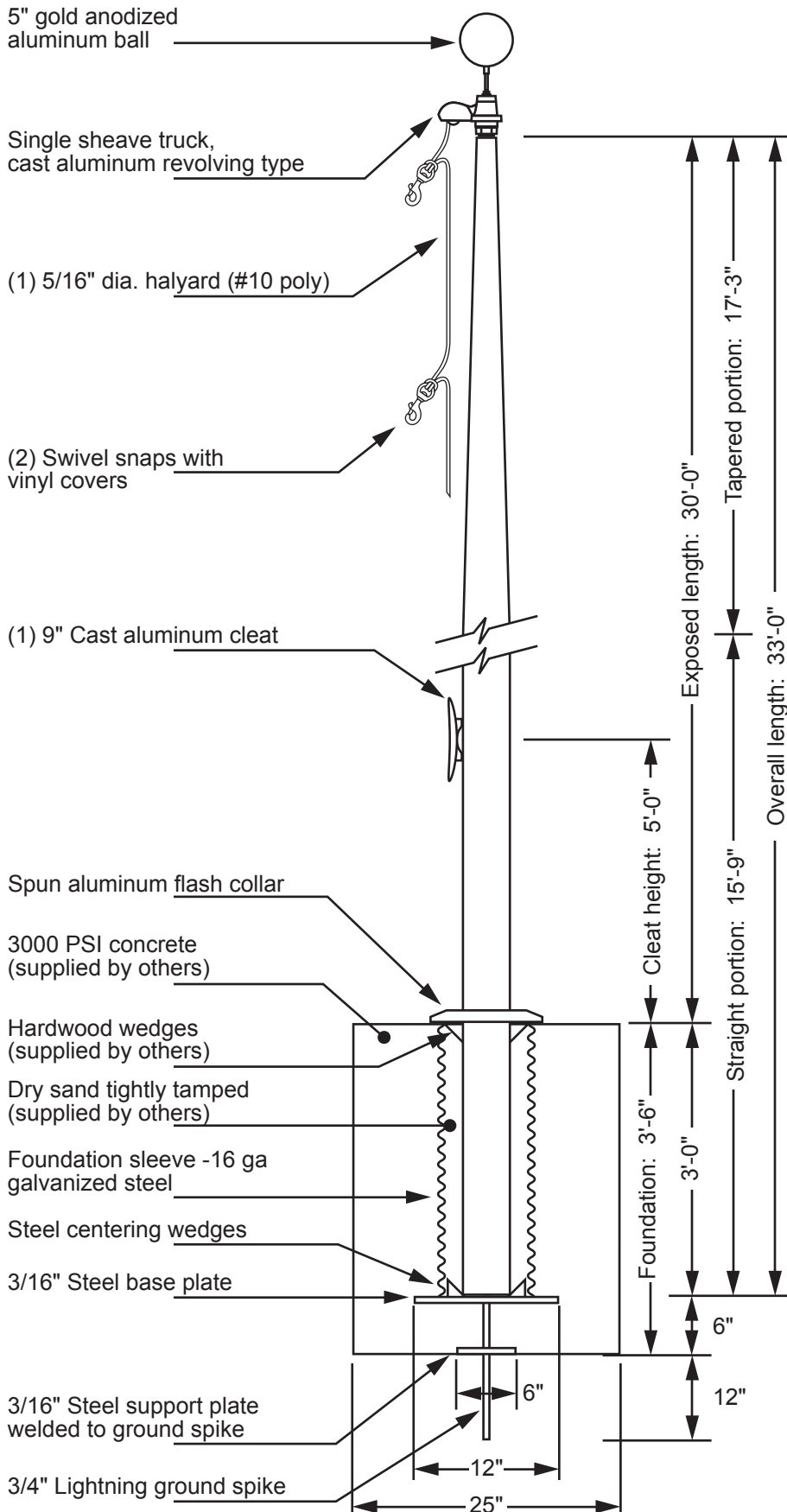


Model ECL30 - External Single Halyard



www.flagpolewarehouse.com



Single Sheave Truck Detail

Revolving truck
Cast aluminum body
Stainless steel ball bearings
Nylon sheave
Cast aluminum spindle

| | | | | |
|-------------|-----------|--------------------------|--------------------------------------|--------------------------------------------------------------------------------------|
| Project: | Date: | Exposed Height __ 30'-0" | Ground Set Tapered Aluminum Flagpole | EDER FLAG 1000 W. Rawson Avenue Oak Creek, WI 53154 www.ederflag.com |
| Location: | Job: | Overall Height __ 33'-0" | ALLOY 6063T6 | |
| Contractor: | Revision: | Butt Diameter __ 5" | 80 grit polish | FINISH: |
| Customer: | | Top Diameter __ 3" | | |
| | | Wall Thickness __ .188" | | |
| | | Ships in 1 section | | |

