

4" - 14 gauge spun aluminum ball
gold anodized

Single sheave truck, cast aluminum,
stationary, non-fouling type

2 Bronze swivel snaps with covers
per halyard

1 Set of halyard: #8 poly

1 - 9" Cast aluminum cleat

Aluminum flash collar

3000 PSI concrete

Hardwood wedges
(supplied by others)

Dry sand tightly tamped
after aligning pole

Foundation sleeve -16 ga
hot dip galvanized steel

1/4" Steel base plate

Model ECSA20

FLAGPOLE
WAREHOUSE

www.flagpolewarehouse.com

Exposed height: 20'-0"

Tapered portion: 11'-0"

Overall length: 22'-0"

Cleat height: 5'-0"

Foundation: 2'-6"

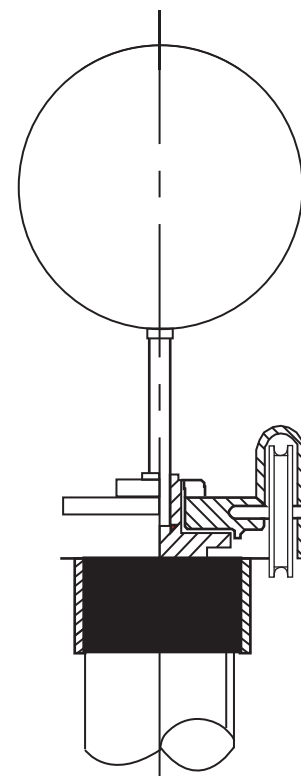
2'-0"

Straight portion: 11'-0"

6"

8"

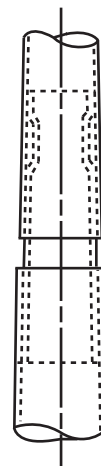
24"



All shafts with overall
length of more than
38'-6" are shipped in
two sections.

Each section matched
marked for field assembly.
Exposed portion of jam
sleeve must be **well
lubricated** prior to
assembly.

1-1/2" maximum shop
gap allowed for field
fitting (ram for tight joint)



Project:	Ground set tapered aluminum flagpole: ALLOY: 6063T6		EDER FLAG	Date:
Location:	Exposed height: 20'-0"	Overall height: 22'-0"	MANUFACTURING COMPANY	Revision:
Architect:	Ship in 1 section	Butt diameter: 4"	1000 W. Rawson Avenue	
Contractor:	Top diameter: 2-3/8"	Wall thickness: .125"	Oak Creek, WI 53154	
Customer:	Finish: 100 grit polish			Job: