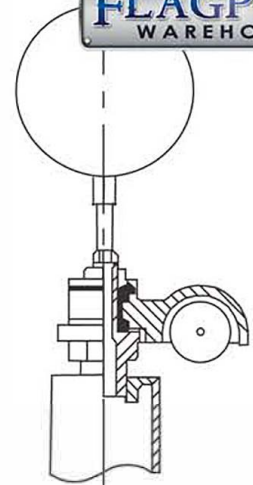




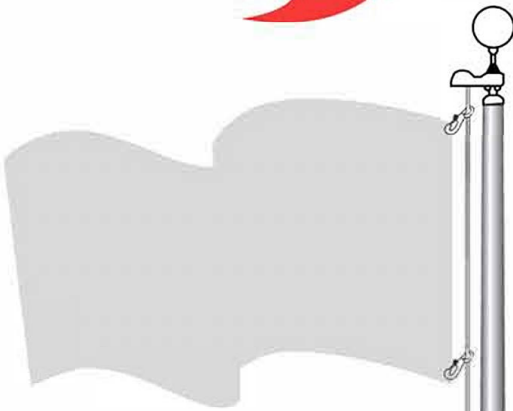
**Model ECH25**  
**HURRICANE SERIES**

Max unflagged wind speed: 255 mph  
Max flagged wind speed: 150+ mph

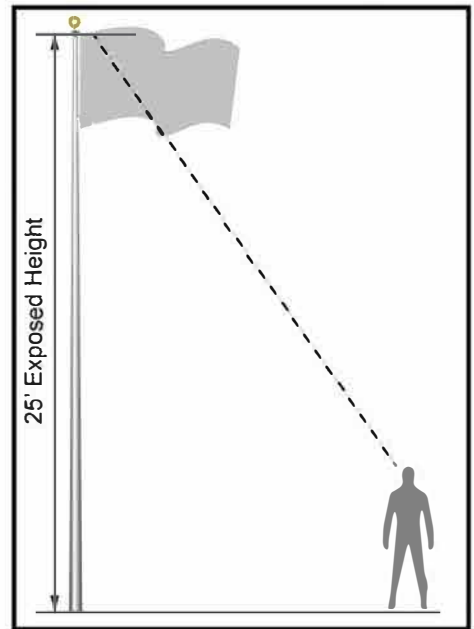
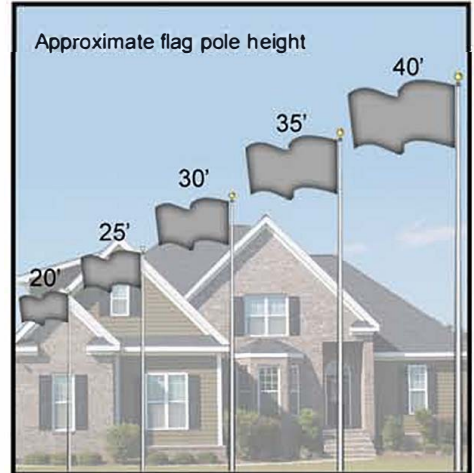
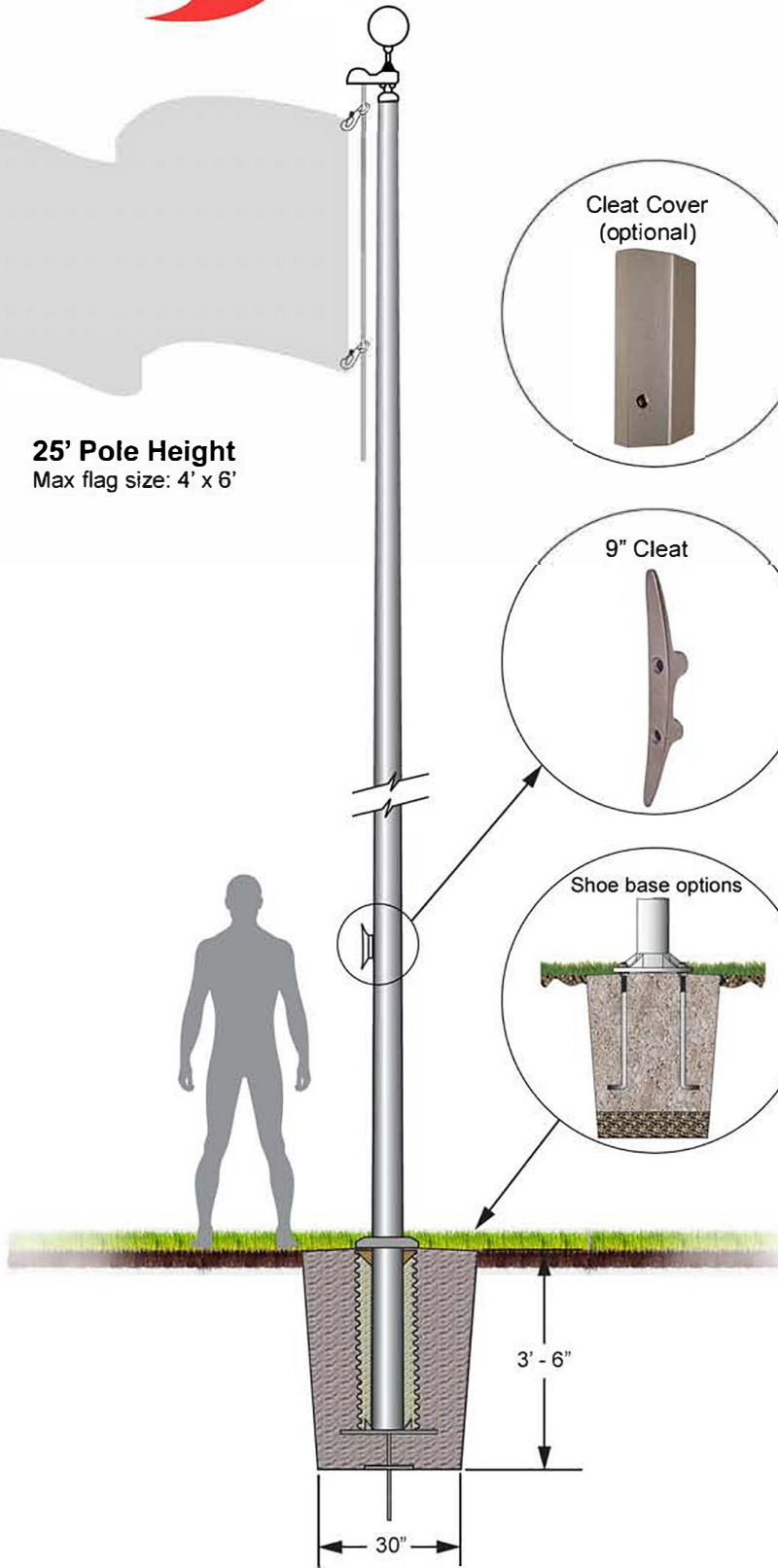
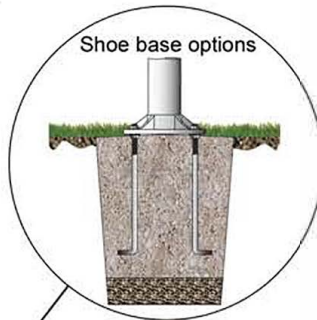
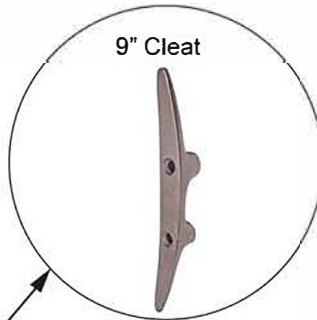


**Truck Details**

Aluminum body  
Stainless steel ball bearings  
Aluminum sheave  
Cast aluminum spindle



**25' Pole Height**  
Max flag size: 4' x 6'

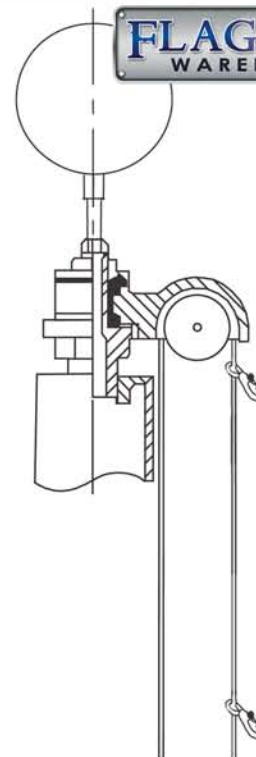


Project:	Ground set tapered aluminium flagpole: ALLOY 6063T6	Flagpole Warehouse	Date:
Location:	Exposed Height: 25' - 0" Overall Height: 28' - 0"	3600 Cantrell Industrial CT.	Revision:
Architect:	Butt diameter: 6" Finish: 100 grit polish	Acworth, GA 30101	
Contractor:	Top diameter: 3-1/2"	www.flagpolewarehouse.com	
Customer:	Wall Thickness: .250" Ship in: 1 Section	1-800-962-0956	Job:

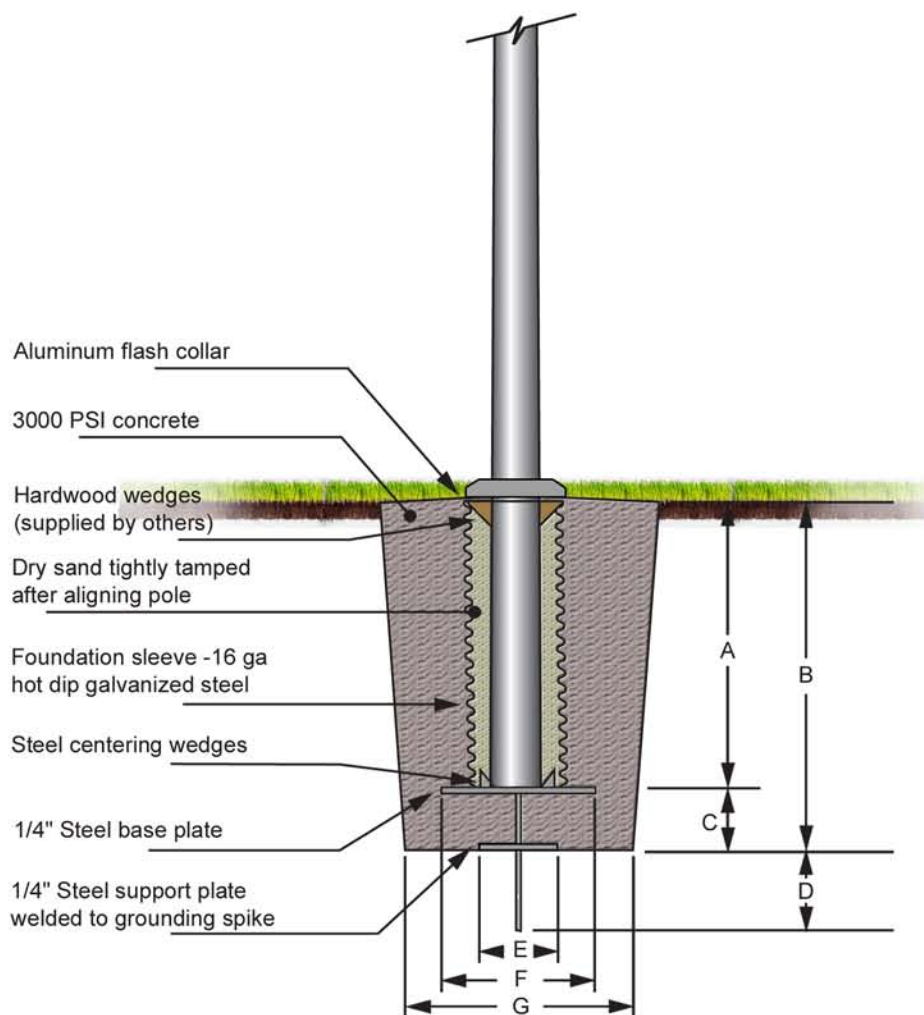
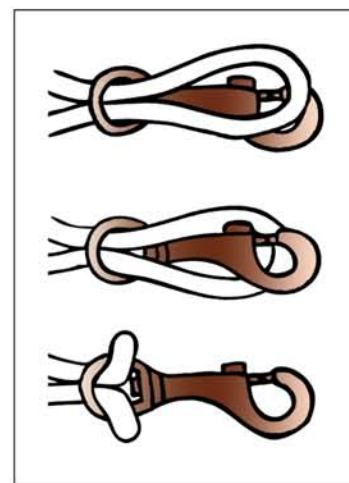
## Model ECH25 25' Pole Height



Pole Height	A	B	C	D	E	F	G
20'	3' - 0"	3' - 6"	6"	12"	6"	12"	24"
25'	3' - 0"	3' - 6"	6"	12"	8"	16"	30"
30'	3' - 0"	3' - 6"	6"	12"	8"	16"	30"
35'	3' - 6"	4' - 0"	6"	12"	8"	16"	35"
40'	4' - 0"	4' - 6"	6"	12"	9"	18"	48"
45'	4' - 0"	4' - 6"	6"	12"	9"	18"	48"
50'	5' - 0"	5' - 6"	6"	12"	10"	20"	60"
60'	6' - 0"	6' - 10"	10"	14"	12"	24"	72"
70'	7' - 0"	8' - 0"	12"	12"	12"	24"	72"
80'	8' - 0"	9' - 0"	12"	12"	12"	24"	72"



- Securing your flag
- Step 1: Slip a loop through the eye of the snap
  - Step 2: Put the loop over the snap
  - Step 3: Draw Tight



Project:	Ground set tapered aluminium flagpole: ALLOY 6063T6	Flagpole Warehouse	Date:
Location:	Exposed Height: 25' - 0" Overall Height: 28' - 0"	3600 Cantrell Industrial CT.	Revision:
Architect:	Butt diameter: 6" Finish: 100 grit polish	Acworth, GA 30101	
Contractor:	Top diameter: 3-1/2"	www.flagpolewarehouse.com	
Customer:	Wall Thickness: .250" Ship in: 1 Section	1-800-962-0956	Job: