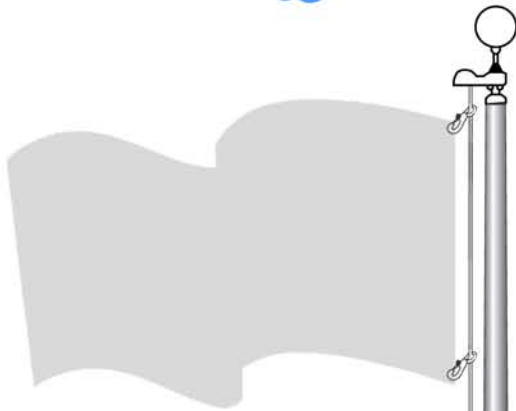


ILLUMINATOR

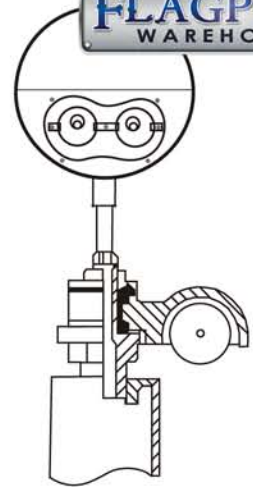
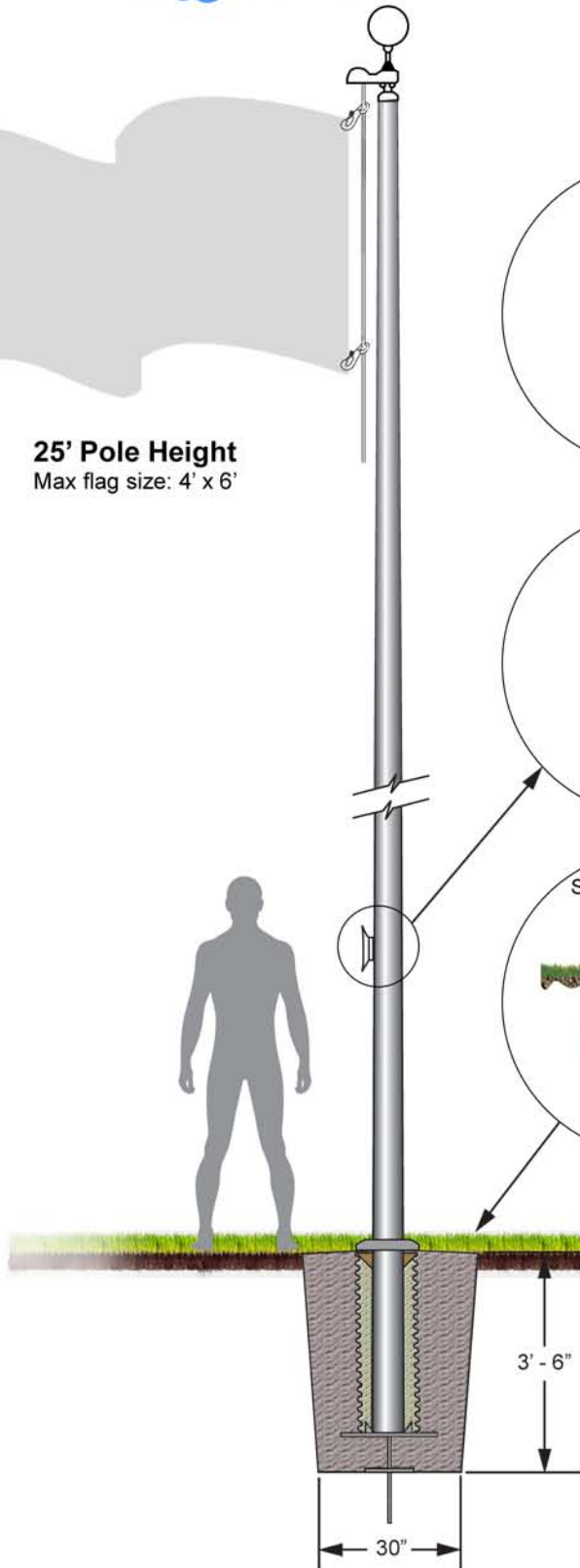
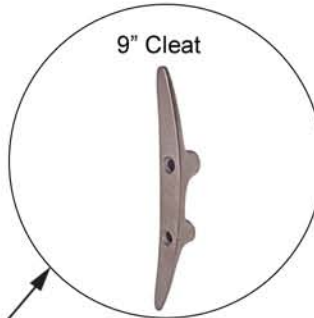
Model ILX25



Max unflagged wind speed: 137 mph
 Max flagged wind speed: 105 mph

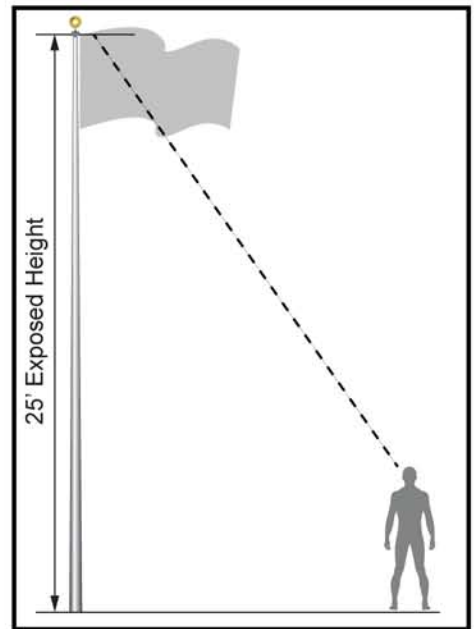
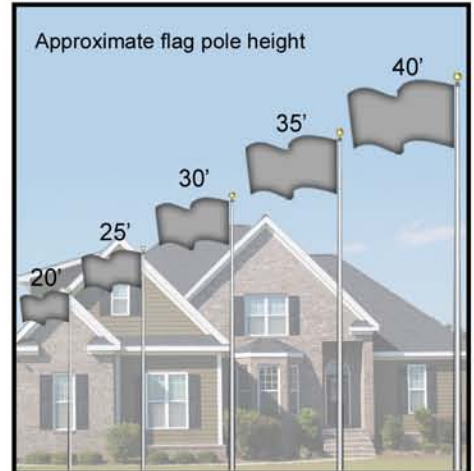


25' Pole Height
 Max flag size: 4' x 6'



Truck Details

- Aluminum body
- Stainless steel ball bearings
- Aluminum sheave
- Cast aluminum spindle



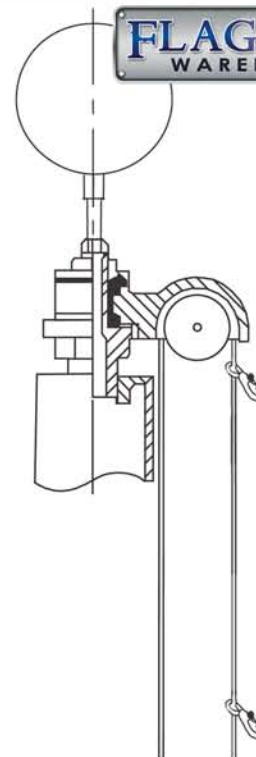
Intertek
 4010565
 Conforms to UL STD 1598

| | | | |
|-------------|---|------------------------------|-----------|
| Project: | Ground set tapered aluminium flagpole: ALLOY 6063T6 | Flagpole Warehouse | Date: |
| Location: | Exposed Height: 25' - 0" Overall Height: 28' - 0" | 3600 Cantrell Industrial CT. | Revision: |
| Architect: | Butt diameter: 5" Finish: 100 grit polish | Acworth, GA 30101 | |
| Contractor: | Top diameter: 3" | www.flagpolewarehouse.com | |
| Customer: | Wall Thickness: .125" Ship in: 1 Section | 1-800-962-0956 | Job: |

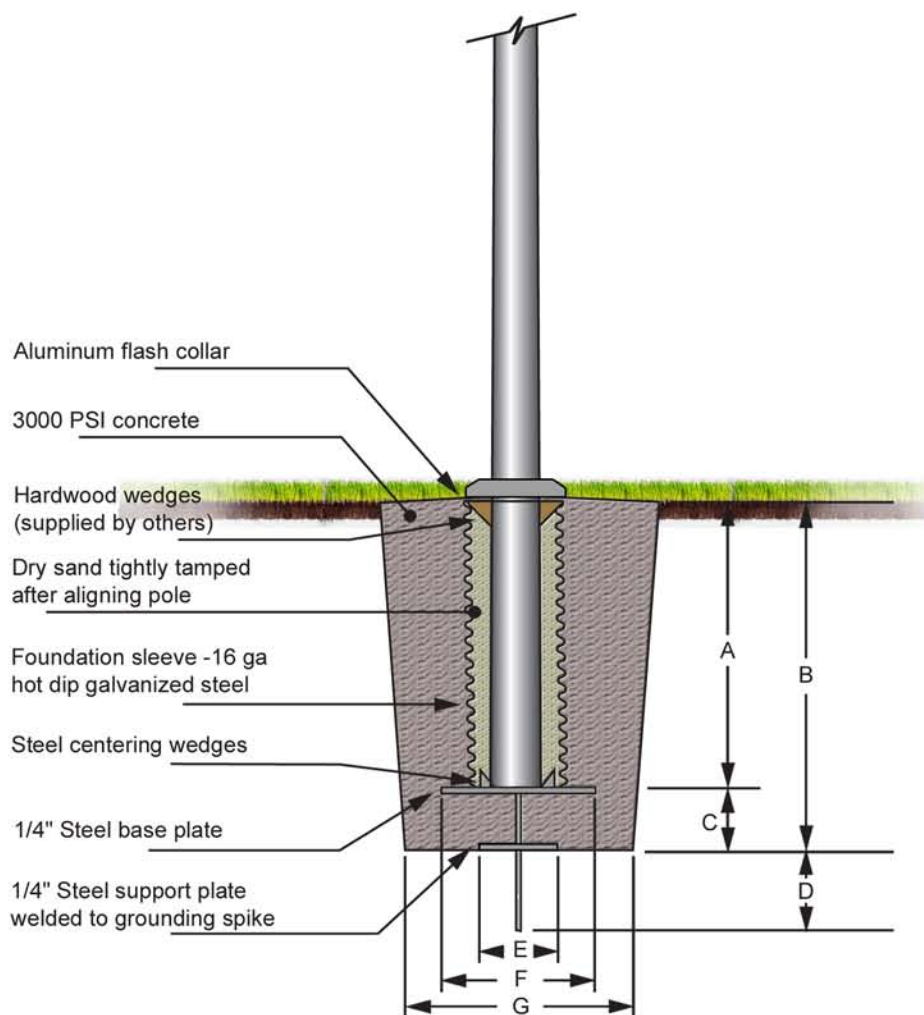
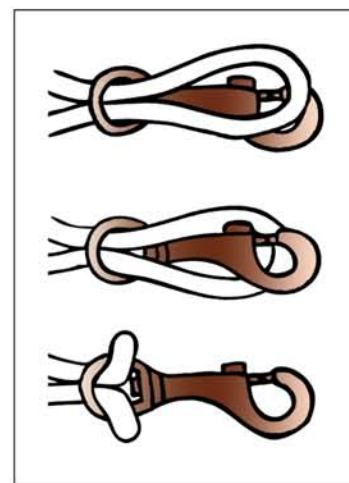
Model ILX25 25' Pole Height



| Pole Height | A | B | C | D | E | F | G |
|-------------|---------|----------|-----|-----|-----|-----|-----|
| 20' | 3' - 0" | 3' - 6" | 6" | 12" | 6" | 12" | 24" |
| 25' | 3' - 0" | 3' - 6" | 6" | 12" | 8" | 16" | 30" |
| 30' | 3' - 0" | 3' - 6" | 6" | 12" | 8" | 16" | 30" |
| 35' | 3' - 6" | 4' - 0" | 6" | 12" | 8" | 16" | 35" |
| 40' | 4' - 0" | 4' - 6" | 6" | 12" | 9" | 18" | 48" |
| 45' | 4' - 0" | 4' - 6" | 6" | 12" | 9" | 18" | 48" |
| 50' | 5' - 0" | 5' - 6" | 6" | 12" | 10" | 20" | 60" |
| 60' | 6' - 0" | 6' - 10" | 10" | 14" | 12" | 24" | 72" |
| 70' | 7' - 0" | 8' - 0" | 12" | 12" | 12" | 24" | 72" |
| 80' | 8' - 0" | 9' - 0" | 12" | 12" | 12" | 24" | 72" |



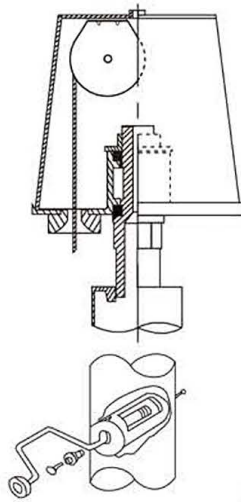
- Securing your flag
- Step 1: Slip a loop through the eye of the snap
 - Step 2: Put the loop over the snap
 - Step 3: Draw Tight



| | | | |
|-------------|---|------------------------------|-----------|
| Project: | Ground set tapered aluminium flagpole: ALLOY 6063T6 | Flagpole Warehouse | Date: |
| Location: | Exposed Height: 25' - 0" Overall Height: 28' - 0" | 3600 Cantrell Industrial CT. | Revision: |
| Architect: | Butt diameter: 5" Finish: 100 grit polish | Acworth, GA 30101 | |
| Contractor: | Top diameter: 3" | www.flagpolewarehouse.com | |
| Customer: | Wall Thickness: .125" Ship in: 1 Section | 1-800-962-0956 | Job: |

COMMERCIAL FLAGPOLE LIGHTING FIXTURE

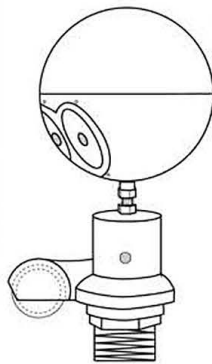
Its patented design lights the flag only and follows the flag as the wind blows it around the flagpole.



Internal Halyard Beacon

Features include:

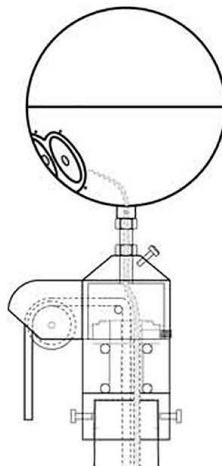
- Revolving Internal Halyard Truck, 359 degrees
- Wire kit 10' past height of pole
- LED Bulb
- Utilizes a winch system to pull up and down the halyard
- Transformer inside fixture. 120V Supply / 12V Output.



External Halyard Beacon Included

Features include:

- Wiring, length of pole +10 feet
- 8" Flagpole Beacon
- Revolving 359 degrees
- LED Bulb
- Suitable for 3.5" top diameter poles
- Transformer inside fixture. 120V Supply / 12V Output.



Internal Halyard CAM System Beacon

Features include:

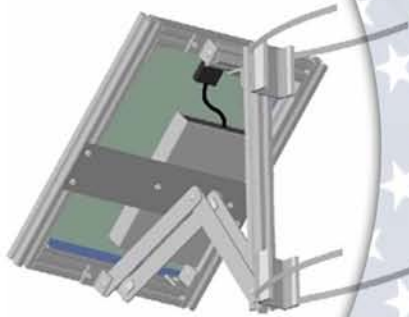
- Wire kit 10' past height of pole
- All Cam units require a pole top adapter
- 8" Flagpole Beacon
- Revolving 359 degrees
- LED Bulb
- Suitable for 20' to 40' poles
- Transformer inside fixture. 120V Supply / 12V Output.



Intertek
4010565
Conforms to UL STD 1598

| | | | |
|-------------|--|------------------------------|-----------|
| Project: | | Flagpole Warehouse | Date: |
| Location: | | 3600 Cantrell Industrial CT. | Revision: |
| Architect: | | Acworth, GA 30101 | |
| Contractor: | | www.flagpolewarehouse.com | |
| Customer: | | 1-800-962-0956 | Job: |

Solar Options



Solar Power Complete Package

Includes:

- Solar Collector
- Battery
- Pole mount
- 20, 30 or 40 watt collector
- Custom designs available



Solar Collector

Includes:

- Collector for solar Flagpole Beacon
- 20, 30 or 40 watt
- Custom designs available



Solar Battery Pack

Includes:

- Battery pack for solar Flagpole Beacon
 - 9, 12 or 15 Amp available
 - 9 Amp - 12 hour run time
 - 12 Amp - 24 hour run time
 - 15 Amp - 30 hour run time
- Installs behind solar collector
- Easy access to on / off switch



Solar Pole Mount

Includes:

- Mount for 20, 30 and 40 watt solar collector
- Easy to install
- Designs may vary



Intertek
4010565
Conforms to UL STD 1598

| | | | |
|-------------|--|------------------------------|-----------|
| Project: | | Flagpole Warehouse | Date: |
| Location: | | 3600 Cantrell Industrial CT. | Revision: |
| Architect: | | Acworth, GA 30101 | |
| Contractor: | | www.flagpolewarehouse.com | |
| Customer: | | 1-800-962-0956 | Job: |