



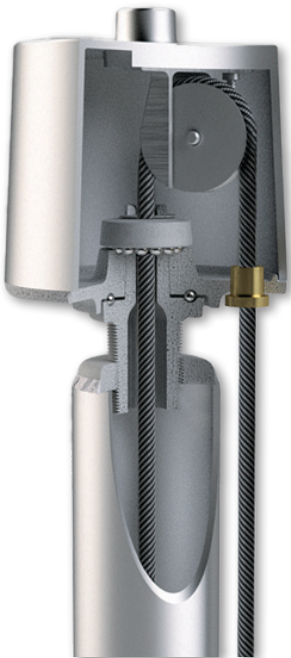
# INSTALLATION INSTRUCTIONS

## INTERNAL HALYARD FLAGPOLE SYSTEM

### GROUND SET and SHOE BASE



Internal Halyard Revolving Truck



Internal Halyard Revolving Truck Cutaway



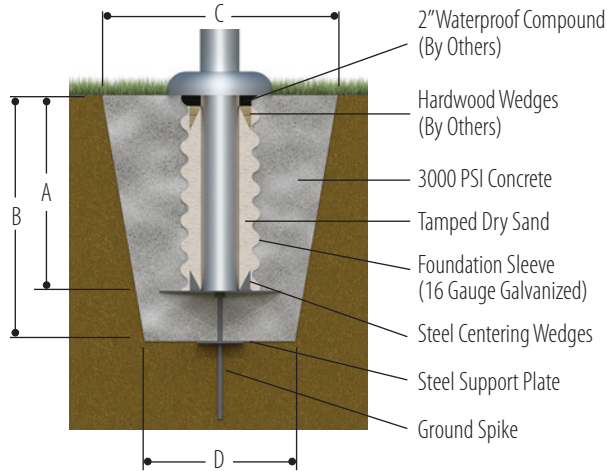
### **WARNING:**

To prevent staining the flagpole must be stored in a dry place OR all packaging must be removed immediately after receiving shipment.





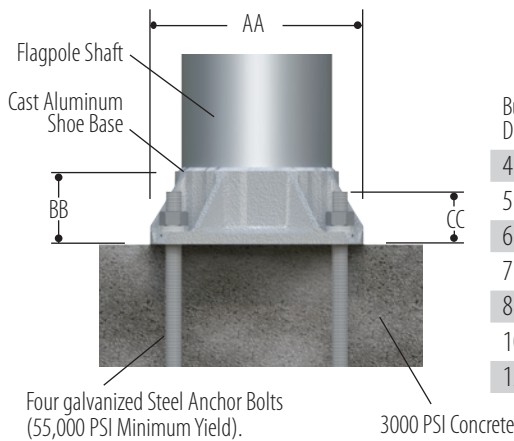
## GROUND SLEEVE WITH STEEL GROUND SPIKE INSTALLATION



EXPOSED MOUNTING HEIGHT	A	B	C	D
20'-0"	2'-0"	2'-6"	30"	24"
25'-0"	2'-6"	3'-0"	36"	24"
30'-0"	3'-0"	3'-6"	36"	24"
35'-0"	3'-6"	4'-0"	36"	30"
40'-0"	4'-0"	4'-6"	45"	36"
45'-0"	4'-6"	5'-0"	45"	36"
50'-0"	5'-0"	5'-6"	50"	42"
60'-0"	6'-0"	6'-6"	60"	48"
70'-0"	7'-0"	7'-6"	60"	48"
80'-0"	8'-0"	8'-6"	72"	48"

NAAMM's Metal Flagpole Manual offers basic suggestions on foundation measurements in firm, dry soil only using dry tamped sand and 3000 PSI concrete. Soil conditions vary by site. Exact foundation requirements should be verified by a Structural Engineer with knowledge of soil conditions in your locality.

## SHOE BASE FOUNDATION INSTALLATION



BUTT DIAMETER	AA BASE SQUARE	BB BASE HEIGHT	CC BOLT PROJECTION	BOLT DIAMETER	BOLT CIRCLE DIAMETER
4"	7-1/2"	3"	2"	3/4"	6-1/2" - 8"
5"	7-1/2"	3"	2"	3/4"	7 1/2"-8"
6"	9-3/4"	3-1/2"	2-3/4"	1"	9"-10"
7"	10-1/2"	3-11/16"	2-3/4"	1"	10"-11"
8"	11-1/4"	3-15/16"	2-3/4"	1"	11"-12"
10"	14"	4-7/8"	3-1/4"	1"	14"-15"
12"	17"	8"	3-3/4"	1-1/4"	16"-18"

