

ATTENTION: CONTRACTOR/INSTALLER:

Concord American Flagpole (CAFP) includes a flat-washer and lock-washer for each anchor bolt shipped in the hardware kit along with the pole. When requested at time of order entry, an extra hex nut and flat washer can be ordered to assist in the placement of the anchor bolt using a plywood template.

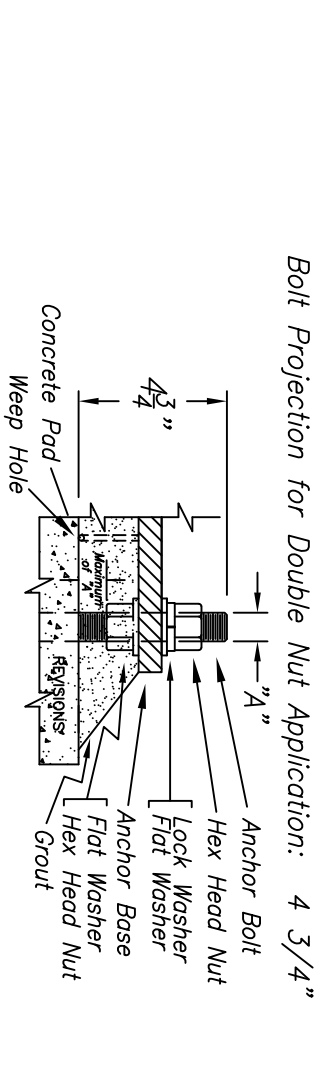
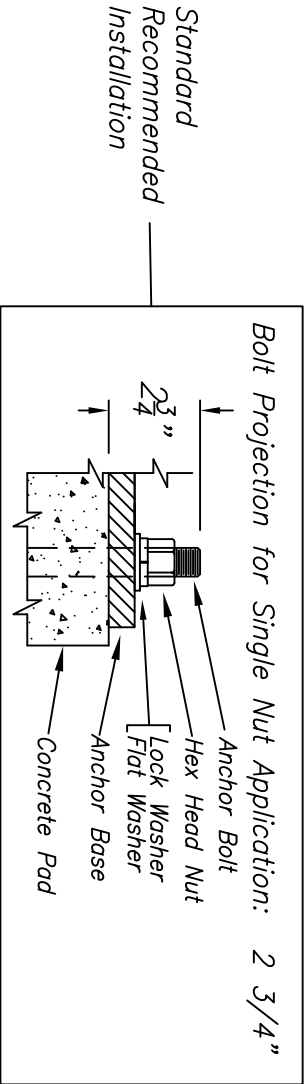
CAFP does not recommend using the extra nut and washer to support the pole. If improperly executed, using the extra nut and washer to tilt the pole base on the anchor bolts with the leveling nut can compromise the structural integrity of the pole base and induce fatigue. Stilting the pole base with leveling nuts should not be used with breakaway devices, because leveling nuts interfere with the device's proper performance. If so mounted, CAFP will void certification that these devices meet AASHTO breakaway requirements. For this reason, CAFP recommends leveling shims (Part #51432-001) in lieu of leveling nuts.

CAFP standard shoe base covers are intended to be used with single nut applications only. If used with leveling nuts, a gap could be created between the foundation and cover.

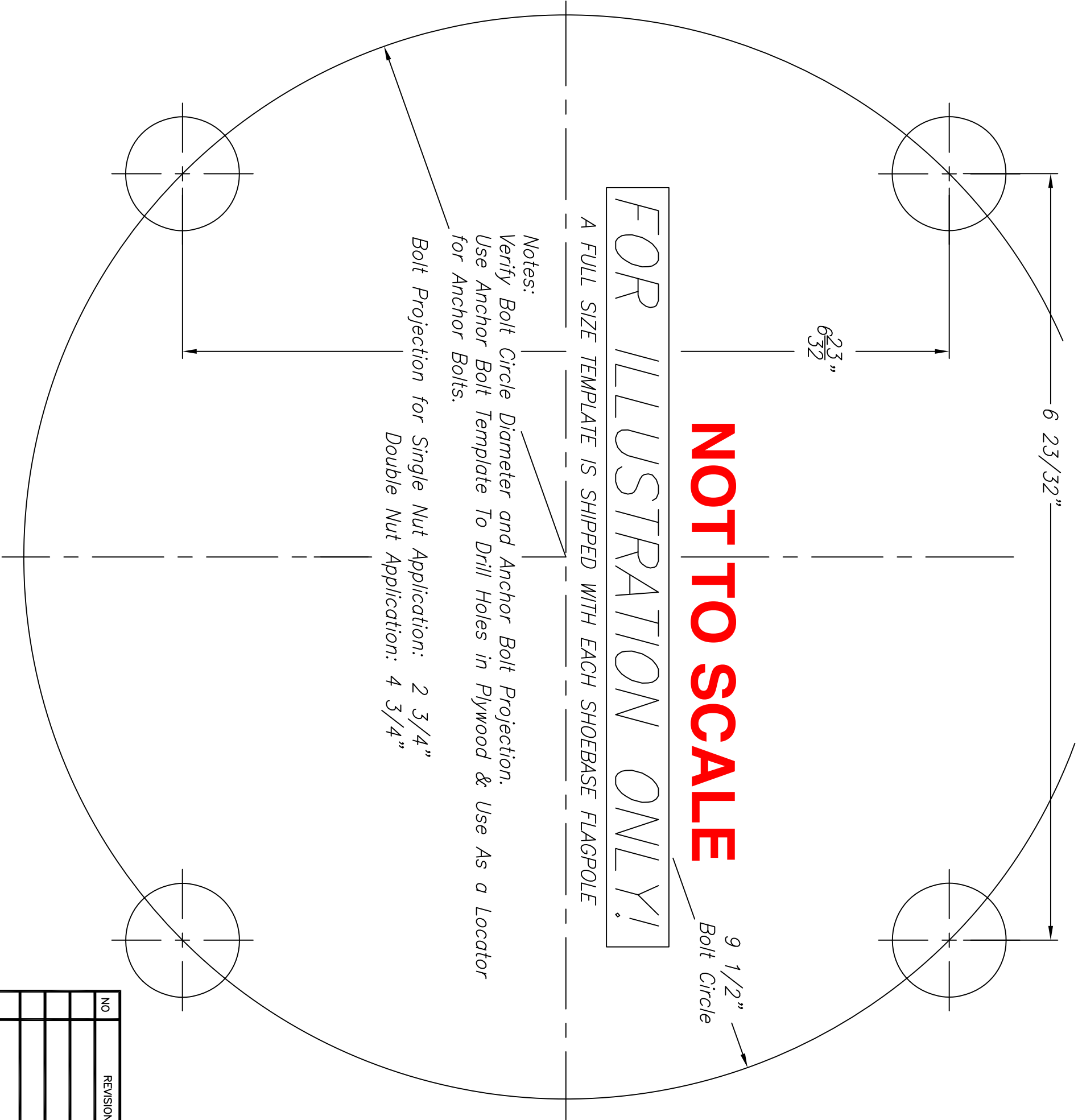
If leveling nuts are used to plumb the pole on a foundation that is not level, the pole base should be directly supported in full contact by a high quality, structural, non-shrink grout with a minimum 28 day compressive strength of 8,000 psi. The washer must also be in place with the top level of the grout surface as shown below in Bolt Projection for Double Nut Application.

Base failure, when the pole is not supported by grout, is not covered by CAFP warranty. Weeps should be provided to allow drainage from the pole base through the concrete or grout.

Breakaway bases and hinged bases should never use double nuts.



Note:
Maximum Dimension Between Bottom of Leveling Nut and Top of Concrete Pad Is One Anchor Bolt Dia.



A FULL SIZE TEMPLATE IS SHIPPED WITH EACH SHOEBASE FLAGPOLE

FOR ILLUSTRATION ONLY!

NOT TO SCALE

9 1/2" Bolt Circle

6 23/32"

6 23/32"

Notes:
Verify Bolt Circle Diameter and Anchor Bolt Projection.
Use Anchor Bolt Template To Drill Holes in Plywood & Use As a Locator for Anchor Bolts.

Bolt Projection for Single Nut Application: 2 3/4"
Double Nut Application: 4 3/4"

NO	REVISIONS	DATE

TITLE	
9 1/2" Dia. BC for 4-Bolt Shoe Base	
CUSTOMER	
SCALE	DATE
NTS	3.2.18
DRAWN	DWG. NO.
PH	
CHECKED	
BC154C1000950-FP	

